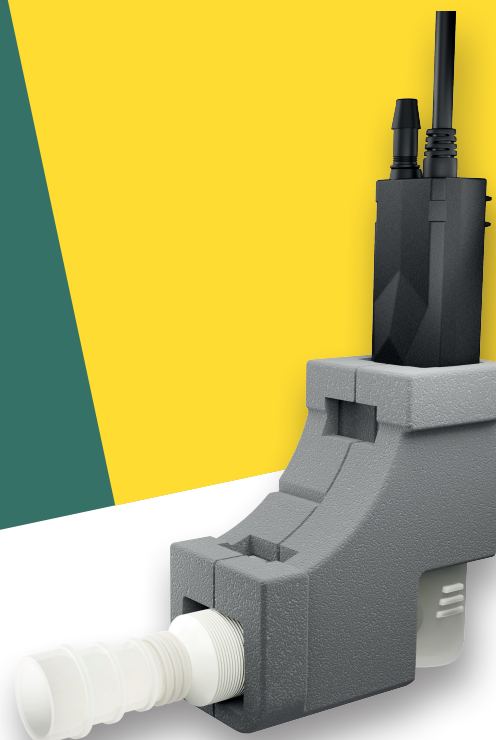




NEW PRODUCT

## VAMP-C

Replacement corner condensate pump



## The flexible replacement for corner condensate pumps

**Plug in, connect, done. VAMP-C is the compact solution for replacing existing corner condensate pumps. Its interface shell fits directly into the corner duct of existing setups and can be trimmed if needed – for seamless integration. It is made of vibration-damping, non-flammable material.**

**Quick retrofit – no rewiring required:**

With the optional adapter, the existing electrical installation can be reused. The corner duct and all plastic components remain in place. Only the pump is replaced and connected to the condensate tray using the included corner hose.

**Quiet, precise, powerful**

With a noise level below 18 dB(A), VAMP-C operates whisper-quietly – ideal for use in noise-sensitive environments such as hotel rooms, living spaces or offices. The optical sensor ensures reliable, low-maintenance level detection.

The high-performance diaphragm pump delivers up to 22 l/h and a pumping height of 15 m – suitable for air conditioning systems

with a cooling capacity of up to 18.5 kW (63,000 BTU/h).

**Interface shell:** Vibration-damping, non-flammable material; can be trimmed if needed

**Optional adapter:** For electrical connection without rewiring

**Compatible with various duct systems**

**Tool-free installation**

**Expandable corner hose:** Also serves as water reservoir (with filter and adapter)

**Whisper-quiet operation:** < 18 dB(A)

**Pump capacity:** Up to 22 litres per hour

**Pumping height:** Up to 15 metres

**Manufactured in Switzerland**



## Specification

| Property                 | Value  |
|--------------------------|--|
| Maximum flow rate        | 22 l/h (6 GPH)   |
| Maximum cooling capacity | 18.5 kW (63'000 BTU/h)   |
| Maximum discharge height | 15 m (49 ft)   |
| Maximum suction lift     | 2 m (6.5 ft)   |
| Maximum horizontal run   | 75 m at 0 m head and 0 m suction<br>(246 ft at 0 ft head and 0 ft suction) |
| Pump type                | Diaphragm pump   |
| Electrical ratings       | 100-240 VAC, 50/60 Hz, 6 W,<br>0.6 W (in idle), Protection Class II        |
| Alarm relay rating       | Normally-closed, failsafe<br>250 VAC, 5 A or 30 VDC, 5 A                   |
| Ingress protection       | Fully potted IP67 / cable connector IP44                                   |
| Operating temperature    | 3 °C – 40 °C (37 °F – 104 °F)  |
| Water temperature        | 3 °C – 40 °C (37 °F – 104 °F)  |
| Storage temperature      | -20 °C – 70 °C (-4 °F – 158 °F)  |
| Noise level              | < 18 dB(A)   |
| Compliance               | CE   |

### Spare parts and accessories:

|  |         |
|--|---------|
| <b>CORNER-HOSE/2</b> (with filter)         | 3004299 |
| <b>HSG-4065/4</b> (Anti-Siphon)            | 3004065 |
| <b>CP-INSTALLATION-CABLE</b>               | 4689089 |
| <b>PVC-TUBE</b> (¾" / 6 mm, 30 m )         | 4679160 |
| <b>INLINE-FILTER</b>                       | 4678597 |
| <b>STAR-TUBE-600</b> (15 m)                | 3004186 |
| <b>KIT-4087</b> (Startube and Anti-Siphon) | 3004087 |