

Digital Recovery Machine

MR45INT

Smart, 1HP Variable Speed DC Motor.

The variable smart speed DC motor is quieter, faster, smoother, and lighter for increased performance and comfort. Liquid slugging is minimised and vapor recovery is maximised. The advanced motor control also adjusts to match incoming voltage so that your machine works with longer extension cords or when the power grid is over capacity on hot days.



Lightweight (10kg)

- DC motor is small and light

Smoother and Faster

- Smooth liquid recovery
- Variable smart speed motor maximises performance
- Rubber feet and motor mounts reduce noise and vibrations
- 1 horsepower motor supplies speed and power
- Micro channel condenser cools faster, especially on hot days

Reliable

- Active electronic monitoring protection system
- Rubberized housing protects components
- Ceramic cylinders resist abrasion
- Rail slides protect the machine and building
- Long lasting piston seals
- Protected electronics for rainy days
- Operating voltage between 200 and 250 VAC

IN/OUT Port Upgrades

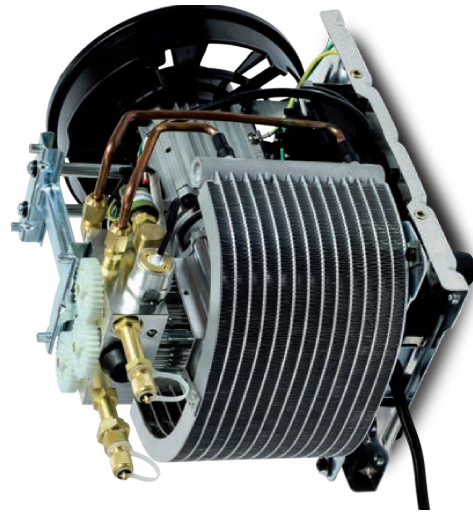
- Ports face out for easy access and direct flow
- Ports elevated from ground
- Rubber bumpers protect ports
- Mesh screen fitting stays in place when removing hoses
- Large rubberized dual-port routing knob

Digital Display

- Easily read the large digits
- Status messages clarify operation
- Blue backlight helps in darker situations
- Withstands long days in the sun and rain

And More

- Power cord stores on the handle
- Room to hook the handle for hoisting to the roof
- Self purge protects MR45 and our environment



Specifications:

Display	2 x 10000 count LCD with status messages	DC Motor	1 HP (variable smart speed) 190 to 255 VAC @ 50/60 Hz 1 phase
Backlight	Blue color	Nominal Current Draw	7.0 AAC
Measurement rate	3.3 times per second	Valve	Single dual-route ball valve
Input Port Pressure	-76cmHg to 4100kPa	Input Port Filtration Dimensions	9 mm mesh screen, stainless 376 mm x 250 mm x 344 mm
Sensor Range	-76cmHg to 4100kPa	Weight	10 kg
Sensor Range	-76cmHg to 4100kPa	Operating Environment	0°C to 43°C
High Pressure Cutoff Resolution and Units	3850kPa, nominal 5 Kpa, 1 psig, 0.05 bar, 0.01 Mpa	Storage Environment	-20°C to 60°C
Pressure Sensor Accuracy	1.3 cmHg, ± 0.5" Hg	Approved Refrigerants	12, 22, 32*, 134A, 143A*, 401A, 401B, 401C, 402A, 402B, 404A, 407A, 407B, 407C, 407D, 408A, 409A, 410A, 448A, 452A, 500, 502, 507, 509, 1234YF**, 1234ZE*
Final Recovery Vacuum	± (0.6% of reading + 14 kPa) 38 cmHg, 14.9" Hg		* Class A2L (mildly flammable) refrigerant
Compressor	Twin cylinder reciprocating (oil-less)		